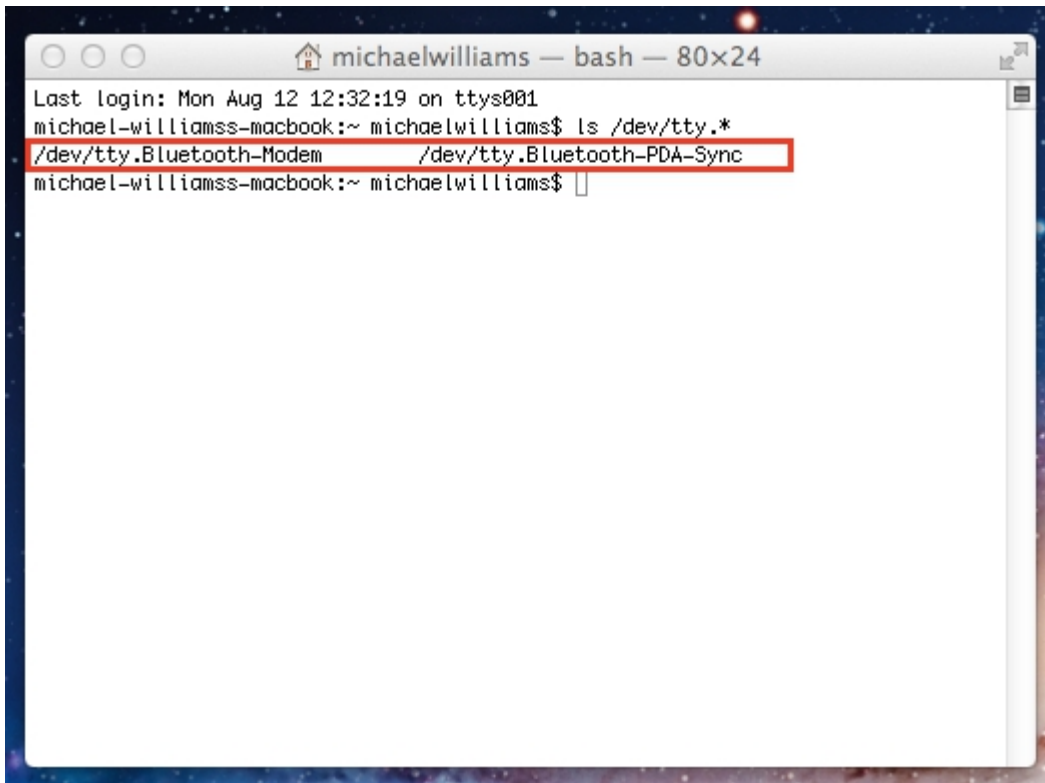


Install FTDI Drivers on a Mac OSX system

Note: The screen shots in this tutorial are from OS X 10.6. The process should be very similar, if not exactly the same, for other versions of Mac OS X.

1. In some cases, when you connect one of our FTDI devices (RS11, HR12, MD33) to a Mac OS X, the drivers are installed automatically. However, most of the time, you will need to install the drivers. To check to see if there are any drivers installed, open Terminal window (Finder->Go->Utilities->Terminal).



```
michaelwilliams — bash — 80x24
Last login: Mon Aug 12 12:32:19 on ttys001
michael-williamss-macbook:~ michaelwilliams$ ls /dev/tty.*
/dev/tty.Blueetooth-Modem      /dev/tty.Blueetooth-PDA-Sync
michael-williamss-macbook:~ michaelwilliams$
```

2. With the Terminal window open, type in “ls /dev/tty.*”. This will show what devices are connected to your Mac. In the example above, there are two bluetooth devices, but the FTDI device is not shown. You can go to our website's download page (www.nolandeng.com/all_downloads.php) to get the drivers needed.

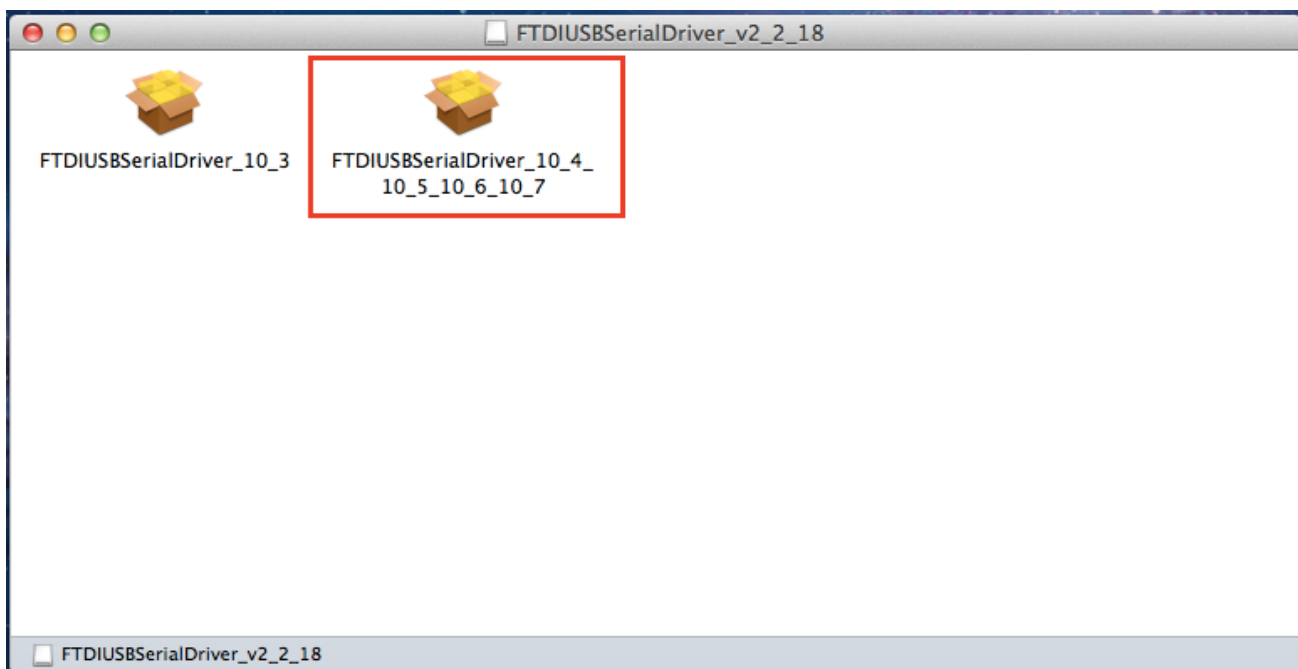
3. Now we need to determine if you need the x86 or x64 bit version of the drivers. Click on the apple icon in the top left of the screen, and choose ‘About this Mac’.

4. Check under ‘Processor’ to see which version you have. Follow the chart below to determine which drivers to download.

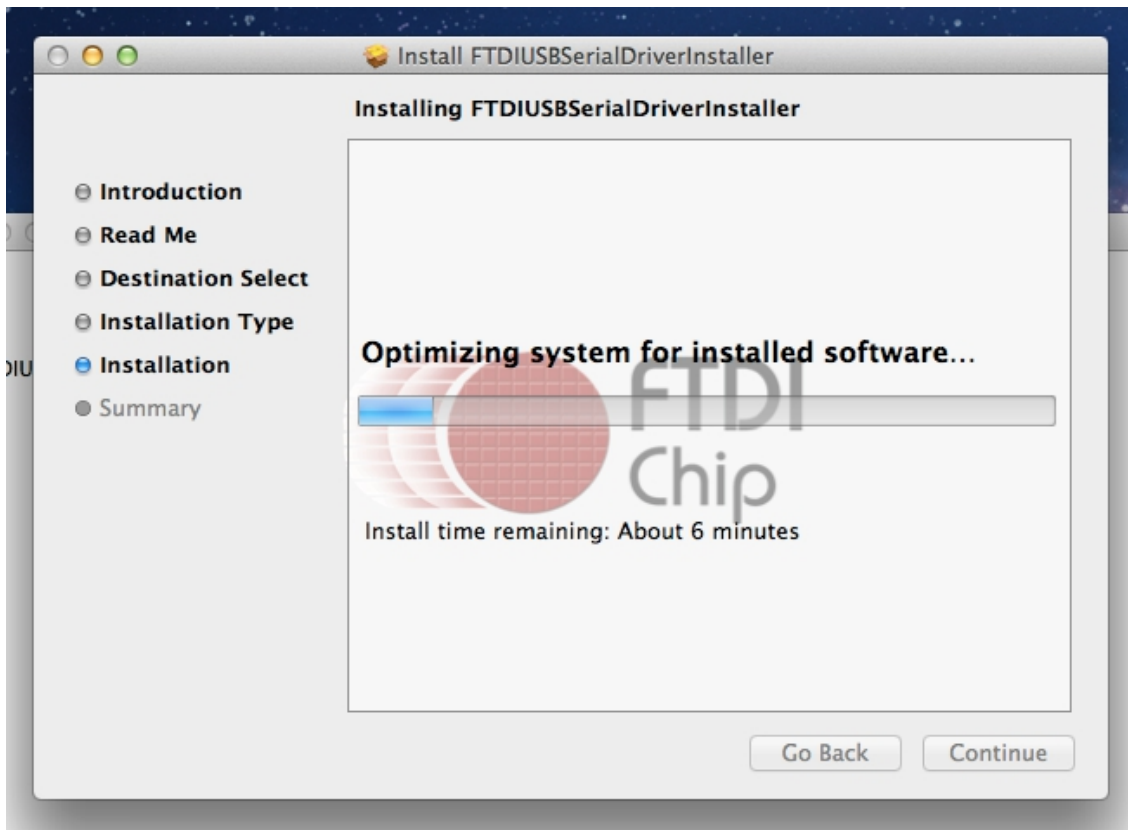


Processor Name	32- or 64-bit
Intel Core Solo	32 bit
Intel Core Duo	32 bit
Intel Core 2 Duo	64 bit
Intel Quad-Core Xeon	64 bit
Dual-Core Intel Xeon	64 bit
Quad-Core Intel Xeon	64 bit
Core i3	64 bit
Core i5	64 bit
Core i7	64 bit

5. Download the files from the site by clicking on the link. Locate the .dmg file that was downloaded to your computer, and double click on it. If you are not sure which version of OS X you have, use the same process as before when finding the processor type. Click on the apple and choose 'About This Mac'. You will then see Version 10.X.Y—use the 10.X to determine your system version. From our example above, our version is 10.7 which, as shown below, is the item to select.



6. Continue through the installation, and wait for it to finish. Then click 'Close.'



7. Now open the Terminal window and retype “ls /dev/tty.*”. The device showing “usbserial” is your FTDI device. This is what you will use to connect to device.

```
michaelwilliams — bash — 80x24
Last login: Mon Aug 12 12:32:19 on ttys001
michael-williamss-macbook:~ michaelwilliams$ ls /dev/tty.*
/dev/tty.Bluetooth-Modem      /dev/tty.Bluetooth-PDA-Sync
michael-williamss-macbook:~ michaelwilliams$ ls /dev/tty.*
/dev/tty.Bluetooth-Modem      /dev/tty.usbserial-DAWELTA0
/dev/tty.Bluetooth-PDA-Sync
michael-williamss-macbook:~ michaelwilliams$
```

8. Congratulations! You have successfully setup your FTDI device for MAC. To verify this, you can download a terminal program called, “goSerial” at <http://www.furrysoft.de/?page=goserial>.

